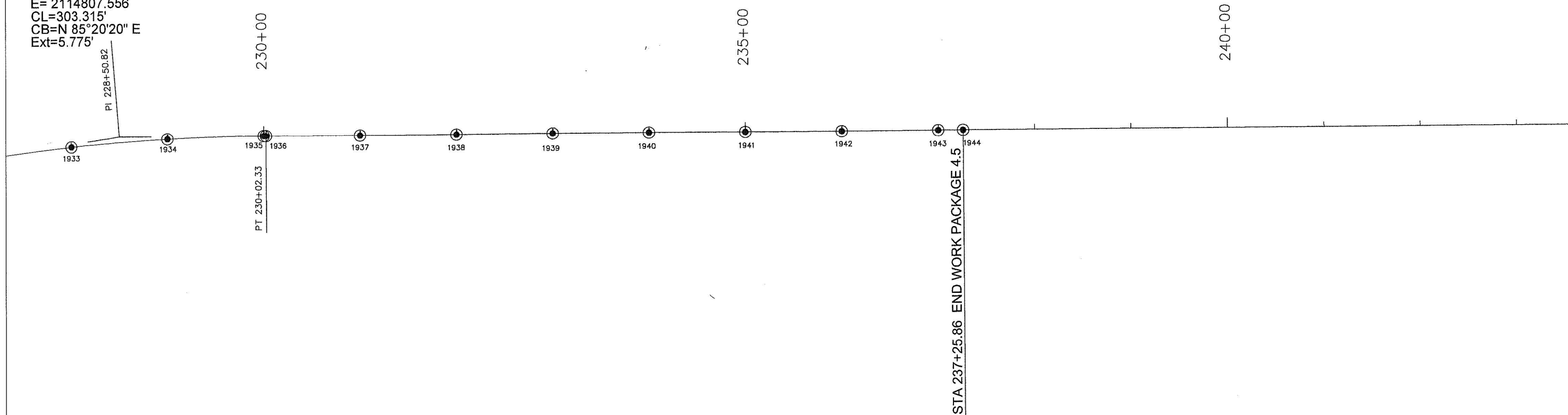


CURVE # 9
 PI Sta= 228+50.82
 R= 2000.000'
 Dc= 2°51'53.24"
 Δ= 8°41'51.62"
 L=303.606'
 T= 152.095'
 N= 168687.499
 E= 2114807.556
 CL=303.315'
 CB=N 85°20'20" E
 Ext=5.775'

BM #220
 STA 230+19.87
 263.92' LT.



CENTERLINE POINTS

PT	NORTH	EAST
1936	168688.32756	2114959.64892
1937	168688.85980	2115057.31803
1938	168689.40472	2115157.31655
1939	168689.94965	2115257.31506
1940	168690.49458	2115357.31358
1941	168691.03951	2115457.31209
1942	168691.58443	2115557.31061
1943	168692.12936	2115657.30912
1944	168692.27028	2115683.16874

BENCHMARKS

PT.	NORTHING	EASTING	ELEV.
220	168952.339	2114975.752	1185.289



SECTION 3, T11N-R3W, 1M
 OKLAHOMA COUNTY, OKLAHOMA

DESIGN		OKLAHOMA DEPARTMENT OF TRANSPORTATION
DRAWN	LJ	
CHECKED	DWM	BENCHMARKS, REFERENCES & CENTERLINE BLVD. STA. 230+00 TO STA. 237+25.86
APPROVED		

PROJECT NO. OKCY-XTWN (048) STATE JOB NO. 17428(88) SHEET NO. S14